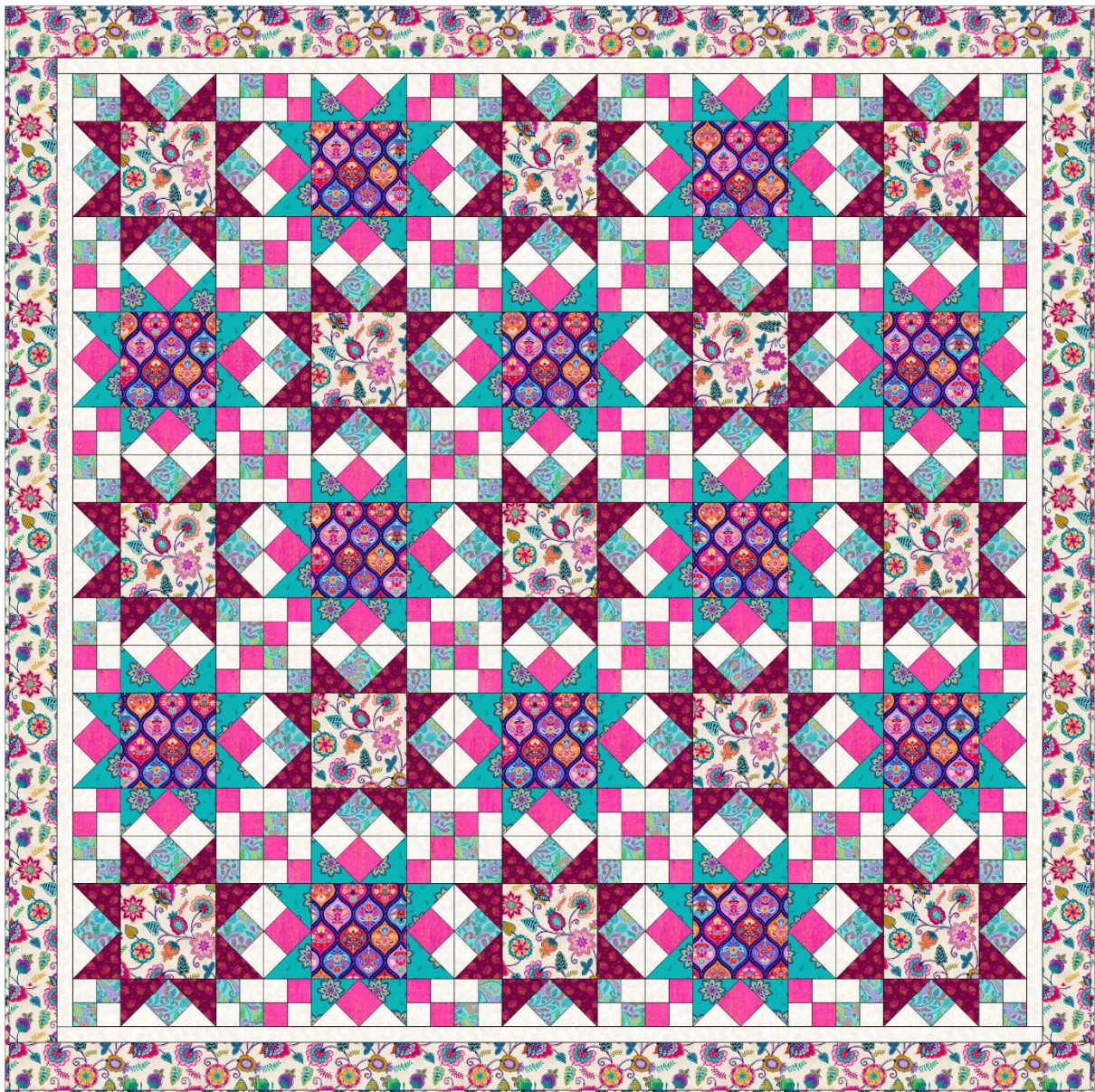




Designed and made by Sally Ablett - Quilt 1

Size of runner 68" x 68" - unfinished block size 12½" x 12½"



Main Diagram

Fabrics from Sambramha collection

Requirements

1. A976A - Sambramha floral on cream - $1\frac{1}{4}$ yd - $1\frac{1}{4}$ m
2. A977B - Jewel drops dark - $\frac{3}{8}$ yd - 40cm
3. A978B - Mini stems on dark wine - $\frac{3}{4}$ yd - $\frac{3}{4}$ m
4. A979B - Celebration flower turquoise - $\frac{5}{8}$ yd - 60cm
5. A980B - Sambramha stitches on turquoise - $\frac{5}{8}$ yd - 60cm
6. A981B - Sambramha blender bright pink - $\frac{5}{8}$ yd - 60cm
7. BB01 - White - $1\frac{3}{4}$ yd - $1\frac{3}{4}$ m

Wadding and backing 74" x 74"

All measurements include $\frac{1}{4}$ " seam allowances; press each seam as you go.

You need to join your fabric to get the length for the border strips.

Cutting

From fabric 1 cut

7 x $3\frac{1}{2}$ " x WOF strips

Sub cut: 2 x $3\frac{1}{2}$ " X $62\frac{1}{2}$ " (Side Outer Borders)

2 x $3\frac{1}{2}$ " X $68\frac{1}{2}$ " (Top & Bottom Outer Borders)

2 x $6\frac{1}{2}$ " x WOF strips

Sub cut: 13 x $6\frac{1}{2}$ " x $6\frac{1}{2}$ "

From fabric 2 cut

2 x $6\frac{1}{2}$ " x WOF strips

Sub cut: 12 x $6\frac{1}{2}$ " x $6\frac{1}{2}$ " (block 2)

From fabric 3 cut

6 x $3\frac{7}{8}$ " x WOF strips

Sub cut: 52 x $3\frac{7}{8}$ " x $3\frac{7}{8}$ " cut each in half diagonally ONCE (block 1)

From fabric 4 cut

5 x $3\frac{7}{8}$ " x WOF strips

Sub cut: 48 x $3\frac{7}{8}$ " x $3\frac{7}{8}$ " cut each in half diagonally ONCE (block 2)

From fabric 5 cut

5 x 2" x WOF (block 1)

4 x $2\frac{5}{8}$ " WOF strips

Sub cut: 52 x $2\frac{5}{8}$ " x $2\frac{5}{8}$ " (block 1)

From fabric 6 cut

5 x 2" x WOF (block 2)

4 x 2⁵/₈" WOF strips

Sub cut: 48 x 2⁵/₈" x 2⁵/₈" (block 2)

From fabric 7 cut

10 x 2" x WOF

6 x 4¹/₄" x WOF strips

Sub cut: 50 x 4¹/₄" x 4¹/₄" cut each in half diagonally TWICE
(Blocks 1 & 2)

6 x 1¹/₂" x WOF strips

Sub cut: 2 x 1¹/₂" X 60¹/₂" (Inner Side Borders)

2 x 1¹/₂" X 62¹/₂" (Inner Top & Bottom Borders)

Making up the blocks



Block 1



Block 2

Both blocks are made up in the same way.

Take your strips of fabrics 5 and 7. With right sides together stitch down the length on one side, press. Now cut at 2" width x 3¹/₂". Join two strips together to make a square as in block diagram.



Flying Geese block.

Sew a small triangle to each side of the square and then stitch the larger triangles to complete the block.

Lay out all the block pieces and sew in rows, press. Stitch your rows together to complete the block. You need 13 blocks in total of block 1.

Block 2.

Make up the blocks as before. You need 12 blocks in total of block 2.

Making up the quilt center.

Lay out all the blocks as in the main diagram.

Sew in rows and then join the rows together to complete the quilt center.

Pressing the seams in the opposite way each time as this will help when sewing the rows together.

Inner border

Stitch the sides to your quilt and then the top and bottom.

Outer border

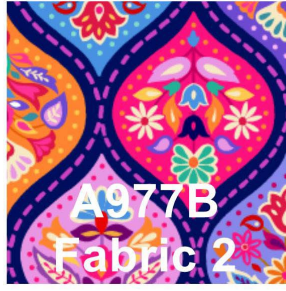
Stitch as the inner border to complete the quilt top.

Quilting and binding

Sandwich the quilt top, wadding and backing together.

Quilt by hand or machine as desired. Trim the backing and wadding to size of quilt.

Use your favorite method to bind the quilt.

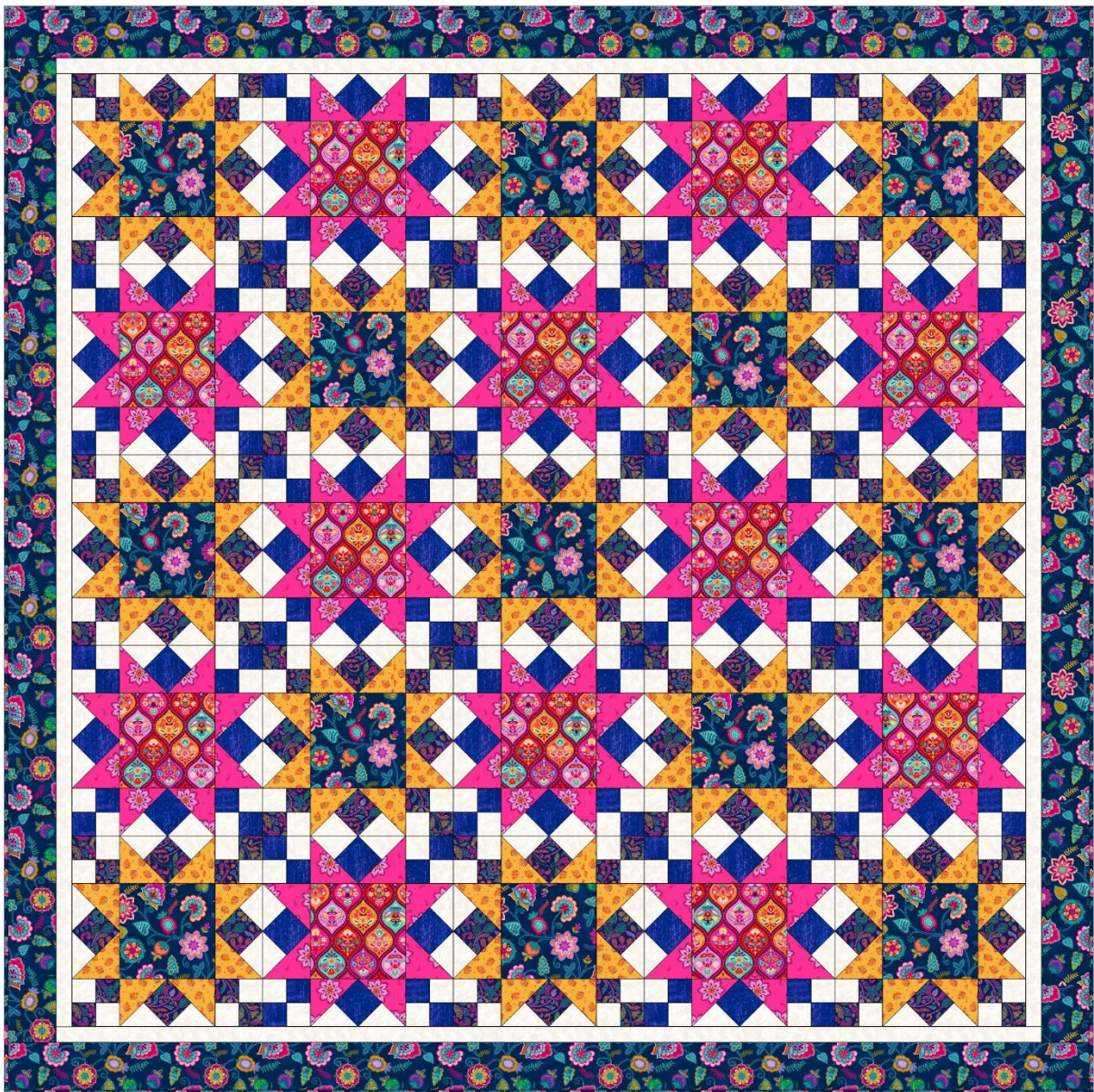


Sally Ablett © 2026



Designed and made by Sally Ablett - Quilt 2

Size of runner 68" x 68" - unfinished block size 12½" x 12½"



Main Diagram

Fabrics from Sambramha collection

Requirements

1. A976C - Sambramha floral on dark blue - $1\frac{1}{4}$ yd - $1\frac{1}{4}$ m
2. A977C - Jewel drops spices - $\frac{3}{8}$ yd - 40cm
3. A978A - Mini stems on yellow spice - $\frac{3}{4}$ yd - $\frac{3}{4}$ m
4. A979A - Celebration flower bright pink - $\frac{5}{8}$ yd - 60cm
5. A980C - Sambramha stitches on dark blue - $\frac{5}{8}$ yd - 60cm
6. A981C - Sambramha blender dark blue - $\frac{5}{8}$ yd - 60cm
7. BB01 - White - $1\frac{3}{4}$ yd - $1\frac{3}{4}$ m

Wadding and backing 74" x 74"

**All measurements include $\frac{1}{4}$ " seam allowances; press each seam as you go.
You need to join your fabric to get the length for the border strips.**

Cutting

From fabric 1 cut

7 x $3\frac{1}{2}$ " x WOF strips

Sub cut: 2 x $3\frac{1}{2}$ " X $62\frac{1}{2}$ " (Side Outer Borders)

2 x $3\frac{1}{2}$ " X $68\frac{1}{2}$ " (Top & Bottom Outer Borders)

2 x $6\frac{1}{2}$ " x WOF strips

Sub cut: 13 x $6\frac{1}{2}$ " x $6\frac{1}{2}$ "

From fabric 2 cut

2 x $6\frac{1}{2}$ " x WOF strips

Sub cut: 12 x $6\frac{1}{2}$ " x $6\frac{1}{2}$ " (block 2)

From fabric 3 cut

6 x $3\frac{7}{8}$ " x WOF strips

Sub cut: 52 x $3\frac{7}{8}$ " x $3\frac{7}{8}$ " cut each in half diagonally ONCE (block 1)

From fabric 4 cut

5 x $3\frac{7}{8}$ " x WOF strips

Sub cut: 48 x $3\frac{7}{8}$ " x $3\frac{7}{8}$ " cut each in half diagonally ONCE (block 2)

From fabric 5 cut

5 x 2" x WOF (block 1)

4 x $2\frac{5}{8}$ " WOF strips

Sub cut: 52 x $2\frac{5}{8}$ " x $2\frac{5}{8}$ " (block 1)

From fabric 6 cut

5 x 2" x WOF (block 2)

4 x 2⁵/₈" WOF strips

Sub cut: 48 x 2⁵/₈" x 2⁵/₈" (block 2)

From fabric 7 cut

10 x 2" x WOF

6 x 4¹/₄" x WOF strips

Sub cut: 50 x 4¹/₄" x 4¹/₄" cut each in half diagonally TWICE
(Blocks 1 & 2)

6 x 1¹/₂" x WOF strips

Sub cut: 2 x 1¹/₂" X 60¹/₂" (Inner Side Borders)

2 x 1¹/₂" X 62¹/₂" (Inner Top & Bottom Borders)

Making up the blocks



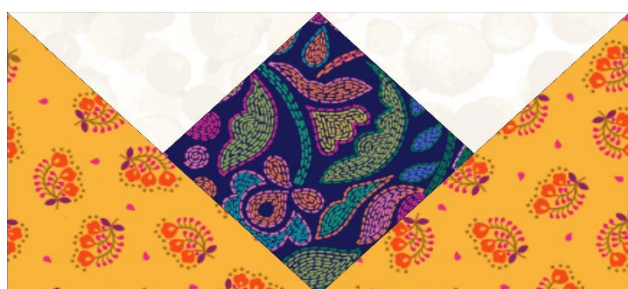
Block 1



Block 2

Both blocks are made up in the same way.

Take your strips of fabrics 5 and 7. With right sides together stitch down the length on one side, press. Now cut at 2" width x 3¹/₂". Join two strips together to make a square as in block diagram.



Flying Geese block.

Sew a small triangle to each side of the square and then stitch the larger triangles to complete the block.

Lay out all the block pieces and sew in rows, press. Stitch your rows together to complete the block. You need 13 blocks in total of block 1.

Block 2

Make up the blocks as before. You need 12 blocks in total of block 2.

Making up the quilt center

Lay out all the blocks as in the main diagram.

Sew in rows and then join the rows together to complete the quilt center.

Pressing the seams in the opposite way each time as this will help when sewing the rows together.

Inner border

Stitch the sides to your quilt and then the top and bottom.

Outer border

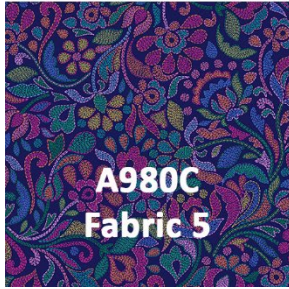
Stitch as the inner border to complete the quilt top.

Quilting and binding

Sandwich the quilt top, wadding and backing together.

Quilt by hand or machine as desired. Trim the backing and wadding to size of quilt.

Use your favorite method to bind the quilt.

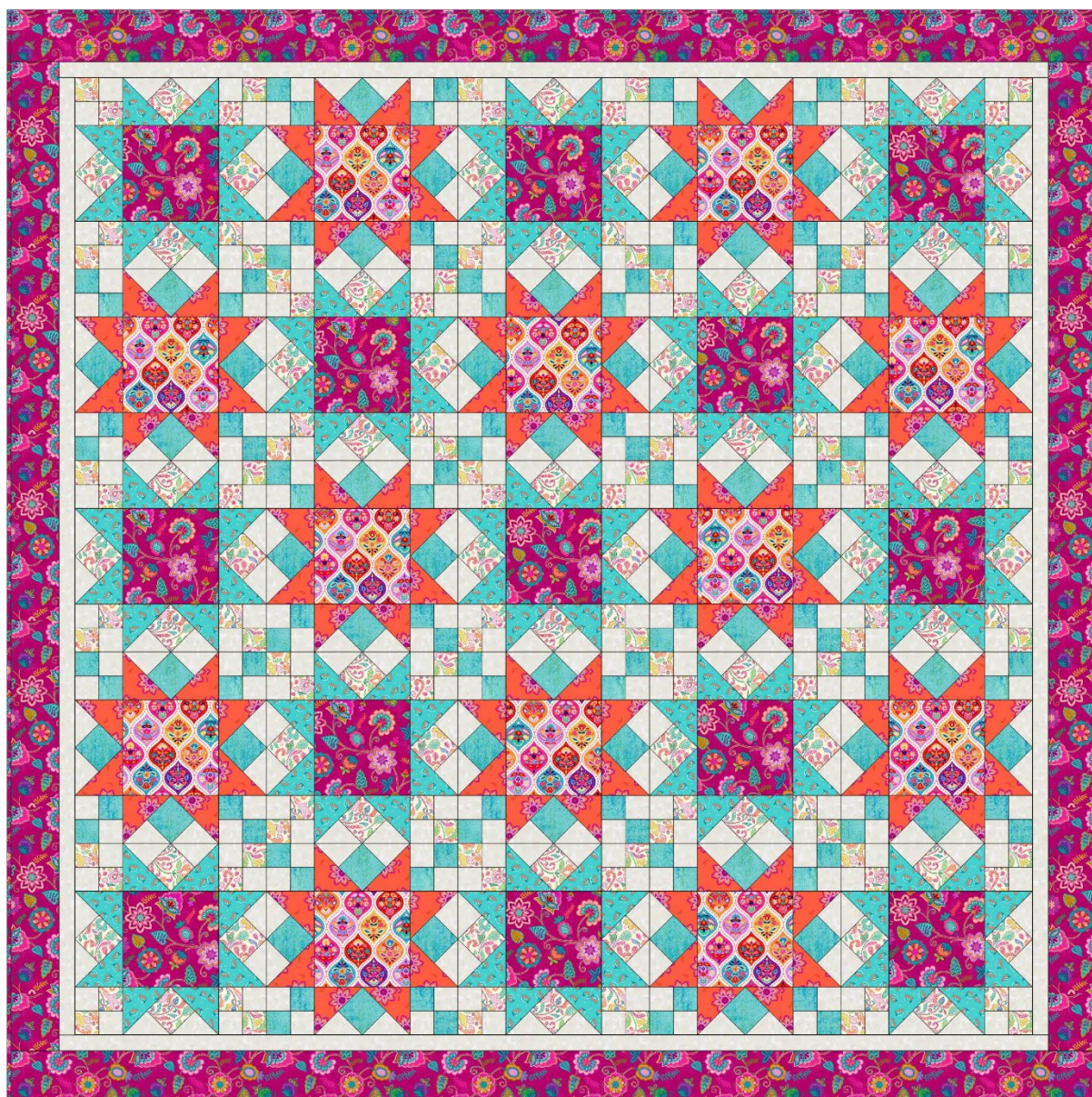


Sally Ablett © 2026



Designed and made by Sally Ablett - Quilt 3

Size of runner 68" x 68" - unfinished block size 12½" x 12½"



Main Diagram

Fabrics from Sambramha collection

Requirements

1. A976B - Sambramha floral on pink - $1\frac{1}{4}$ yd - $1\frac{1}{4}$ m
2. A977A - Jewel drops cream - $\frac{3}{8}$ yd - 40cm
3. A978C - Mini stems on turquoise - $\frac{3}{4}$ yd - $\frac{3}{4}$ m
4. A979C - Celebration flower Indian sunset - $\frac{5}{8}$ yd - 60cm
5. A980A - Sambramha stitches on cream - $\frac{5}{8}$ yd - 60cm
6. A981A - Sambramha blender turquoise - $\frac{3}{8}$ yd - 60cm
7. BB01 - White - $1\frac{3}{4}$ yd - $1\frac{3}{4}$ m

Wadding and backing 74" x 74"

All measurements include $\frac{1}{4}$ " seam allowances; press each seam as you go.

You need to join your fabric to get the length for the border strips.

Cutting

From fabric 1 cut

7 x $3\frac{1}{2}$ " x WOF strips

Sub cut: 2 x $3\frac{1}{2}$ " X $62\frac{1}{2}$ " (Side Outer Borders)

2 x $3\frac{1}{2}$ " X $68\frac{1}{2}$ " (Top & Bottom Outer Borders)

2 x $6\frac{1}{2}$ " x WOF strips

Sub cut: 13 x $6\frac{1}{2}$ " x $6\frac{1}{2}$ "

From fabric 2 cut

2 x $6\frac{1}{2}$ " x WOF strips

Sub cut: 12 x $6\frac{1}{2}$ " x $6\frac{1}{2}$ " (block 2)

From fabric 3 cut

6 x $3\frac{7}{8}$ " x WOF strips

Sub cut: 52 x $3\frac{7}{8}$ " x $3\frac{7}{8}$ " cut each in half diagonally ONCE (block 1)

From fabric 4 cut

5 x $3\frac{7}{8}$ " x WOF strips

Sub cut: 48 x $3\frac{7}{8}$ " x $3\frac{7}{8}$ " cut each in half diagonally ONCE (block 2)

From fabric 5 cut

5 x 2" x WOF (block 1)

4 x $2\frac{5}{8}$ " WOF strips

Sub cut: 52 x $2\frac{5}{8}$ " x $2\frac{5}{8}$ " (block 1)

From fabric 6 cut

5 x 2" x WOF (block 2)

4 x 2⁵/₈" WOF strips

Sub cut: 48 x 2⁵/₈" x 2⁵/₈" (block 2)

From fabric 7 cut

10 x 2" x WOF

6 x 4¹/₄" x WOF strips

Sub cut: 50 x 4¹/₄" x 4¹/₄" cut each in half diagonally TWICE
(Blocks 1 & 2)

6 x 1¹/₂" x WOF strips

Sub cut: 2 x 1¹/₂" X 60¹/₂" (Inner Side Borders)

2 x 1¹/₂" X 62¹/₂" (Inner Top & Bottom Borders)

Making up the blocks



Block 1



Block 2

Both blocks are made up in the same way.

Take your strips of fabrics 5 and 7. With right sides together stitch down the length on one side, press. Now cut at 2" width x 3¹/₂". Join two strips together to make a square as in block diagram.



Flying Geese block.

Sew a small triangle to each side of the square and then stitch the larger triangles to complete the block.

Lay out all the block pieces and sew in rows, press. Stitch your rows together to complete the block. You need 13 blocks in total of block 1.

Block 2.

Make up the blocks as before. You need 12 blocks in total of block 2.

Making up the quilt center

Lay out all the blocks as in the main diagram.

Sew in rows and then join the rows together to complete the quilt center.

Pressing the seams in the opposite way each time as this will help when sewing the rows together.

Inner border

Stitch the sides to your quilt and then the top and bottom.

Outer border

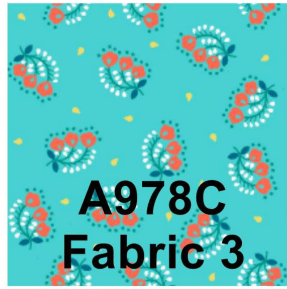
Stitch as the inner border to complete the quilt top.

Quilting and binding

Sandwich the quilt top, wadding and backing together.

Quilt by hand or machine as desired. Trim the backing and wadding to size of quilt.

Use your favorite method to bind the quilt.



Sally Ablett © 2026