



Designed and made by Sally Ablett – Table topper 1

Size of runner 44" x 44" - unfinished block size 12½" x 12½"



Main Diagram

Fabrics from Country Craft collection

Requirements

1. A955A - Cream croft – fat $\frac{1}{4}$
2. A956B - Duck egg tractors – fat $\frac{1}{4}$
3. A957C - Farm friends on honey - $\frac{1}{2}$ yd - $\frac{1}{2}$ m
4. A958B - Hens on grey - $\frac{3}{8}$ yd - 40cm
5. A959C - Country croft on earth – fat $\frac{1}{4}$
6. BB02 - Cream - $\frac{1}{2}$ yd - $\frac{1}{2}$ m
7. BBS10 - BBS10 - Duck egg - $\frac{3}{4}$ yd - $\frac{3}{4}$ m

Wadding and backing 50" x 50"

All measurements include $\frac{1}{4}$ " seam allowances; press each seam as you go

Cutting

From fabric 1 cut

13 x $4\frac{1}{2}$ " x $4\frac{1}{2}$ " for blocks 1 & 2

4 x $3\frac{1}{2}$ " x $3\frac{1}{2}$ " corners on border

From fabric 2 cut

8 x $2\frac{1}{2}$ " x $6\frac{1}{2}$ " block 2

8 x $2\frac{1}{2}$ " x $4\frac{1}{2}$ " block 2

4 x $2\frac{1}{2}$ " x $2\frac{1}{2}$ " block 2

From fabric 3 cut

4 x $3\frac{1}{2}$ " x $38\frac{1}{2}$ " outer border

From fabric 4 cut

10 x $5\frac{1}{4}$ " x $5\frac{1}{4}$ " cut in half diagonally twice block 1

8 x $2\frac{1}{2}$ " x $4\frac{1}{2}$ " block 2

8 x $2\frac{1}{2}$ " x $2\frac{1}{2}$ " block 2

From fabric 5 cut

8 x $2\frac{1}{2}$ " x $6\frac{1}{2}$ " block 2

8 x $2\frac{1}{2}$ " x $4\frac{1}{2}$ " block 2

4 x $2\frac{1}{2}$ " x $2\frac{1}{2}$ " block 2

From fabric 6 cut

20 x 2½" x 4½" block 2

20 x 2½" x 2½" block 2

From fabric 7 cut

2 x 1½" x 38½" inner border top & bottom

2 x 1½" x 36½" inner border sides

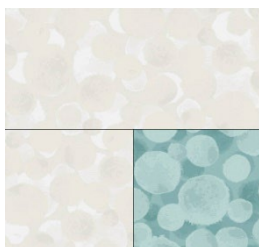
5 x 5¼" x 5¼" cut in half diagonally twice block 1

20 x 2½" x 2½" block 1

Making up the blocks



Block 1 diagram. Lay out your fabric pieces for the block as in the diagram. Sew the corner squares by stitching the two small squares together and then adding your strip 2½" x 4½" of the background fabric.



Look at the diagram for placement of the fabrics.



Stitch two of the small triangles together.

Do the same to the other two and then stitch the two together to make a square. Make the other three in the same way. Lay out as in block diagram a sew in rows and then the rows together to complete the block. You need 5 blocks in total.



Block 2 diagram. This block is made up in four parts. Two of each set for the block.



1



2



3



4

On 1 and 4 you will start by sewing the two squares together. Next add the strip of fabric 4. Now sew the strips of $2\frac{1}{2}$ " x $4\frac{1}{2}$ " to the sides and then the last strips of $2\frac{1}{2}$ " x $6\frac{1}{2}$ " to complete the part blocks 1 and 4. Next stitch the other two part of the block 2 & 4 using the short strips as in the diagram. Adding the last two strips. Join them together in rows and then the rows together to complete the block. You need 4 blocks in total.

Making up the quilt center

Lay out your blocks as in the main diagram. Stitch in rows and then sew your rows together to complete the table topper.

Borders

Inner border

Take your strips of fabric 7. Stitch the sides, press and then the top & bottom.

Middle border

Take the strips of fabric 3. On the top and bottom strips add the squares of fabric 1 to each end.

Sew the sides to the table topper and then stitch the top & bottom to complete the top.

Quilting and binding

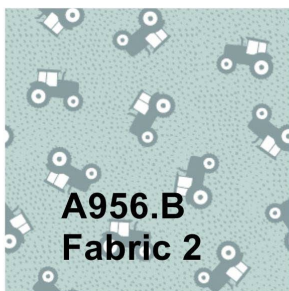
Sandwich the table topper, wadding and backing together.

Quilt by hand or machine as desired. Trim the backing and wadding to size of the table topper.

Use your favorite method from fabric 7 to bind the quilt.



A955.A
Fabric 1



A956.B
Fabric 2



A957.C
Fabric 3



A958.B
Fabric 4



A959.C
Fabric 5



BB02
Fabric 6



BBS10
Fabric 7

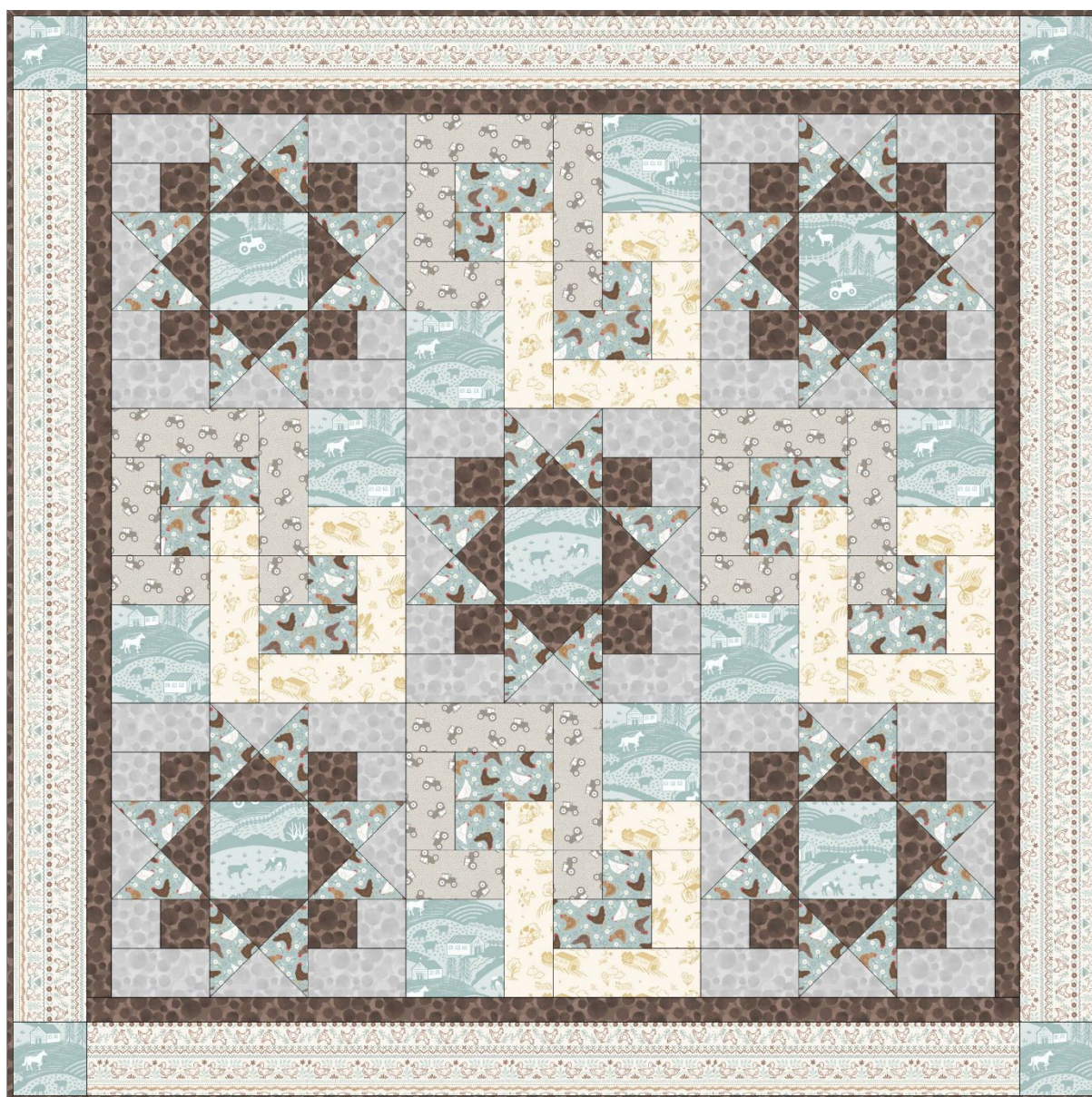


Sally Ablett © 2025



Designed and made by Sally Ablett – Table topper 2

Size of runner 44" x 44" - unfinished block size 12½" x 12½"



Main Diagram

Fabrics from Country Craft collection

Requirements

1. A955B - Duck egg croft – fat $\frac{1}{4}$
2. A956.A - Mink tractors – fat $\frac{1}{4}$
3. A957A - Farm friends on cream - $\frac{1}{2}$ yd
4. A958C - Hens on blue - $\frac{3}{8}$ yd - 40cm
5. A959A - Country croft honey on cream - fat $\frac{1}{4}$
6. BB03 - Light grey - $\frac{1}{2}$ yd - $\frac{1}{2}$ m
7. BB024 - Chocolate - $\frac{3}{4}$ yd - $\frac{3}{4}$ m

Wadding and backing 50" x 50"

All measurements include $\frac{1}{4}$ " seam allowances; press each seam as you go

Cutting

From fabric 1 cut

13 x $4\frac{1}{2}$ " x $4\frac{1}{2}$ " for blocks 1 & 2

4 x $3\frac{1}{2}$ " x $3\frac{1}{2}$ " corners on border

From fabric 2 cut

8 x $2\frac{1}{2}$ " x $6\frac{1}{2}$ " block 2

8 x $2\frac{1}{2}$ " x $4\frac{1}{2}$ " block 2

4 x $2\frac{1}{2}$ " x $2\frac{1}{2}$ " block 2

From fabric 3 cut

4 x $3\frac{1}{2}$ " x $38\frac{1}{2}$ " outer border

From fabric 4 cut

10 x $5\frac{1}{4}$ " x $5\frac{1}{4}$ " cut in half diagonally twice block 1

8 x $2\frac{1}{2}$ " x $4\frac{1}{2}$ " block 2

8 x $2\frac{1}{2}$ " x $2\frac{1}{2}$ " block 2

From fabric 5 cut

8 x $2\frac{1}{2}$ " x $6\frac{1}{2}$ " block 2

8 x $2\frac{1}{2}$ " x $4\frac{1}{2}$ " block 2

4 x $2\frac{1}{2}$ " x $2\frac{1}{2}$ " block 2

From fabric 6 cut

20 x 2½" x 4½" block 2

20 x 2½" x 2½" block 2

From fabric 7 cut

2 x 1½" x 38½" inner border top & bottom

2 x 1½" x 36½" inner border sides

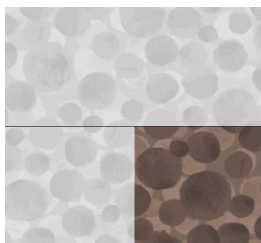
5 x 5¼" x 5¼" cut in half diagonally twice block 1

20 x 2½" x 2½" block 1

Making up the blocks



Block 1 diagram. Lay out your fabric pieces for the block as in the diagram. Sew the corner squares by stitching the two small squares together and then adding your strip 2½" x 4½" of the background fabric.



Look at the diagram for placement of the fabrics.



Stitch two of the small triangles together.

Do the same to the other two and then stitch the two together to make a square. Make the other three in the same way. Lay out as in block diagram a sew in rows and then the rows together to complete the block. You need 5 blocks in total.



Block 2 diagram. This block is made up in four parts. Two of each set for the block.



1



2



3



4

On 1 and 4 you will start by sewing the two squares together. Next add the strip of fabric 4. Now sew the strips of $2\frac{1}{2}$ " x $4\frac{1}{2}$ " to the sides and then the last strips of $2\frac{1}{2}$ " x $6\frac{1}{2}$ " to complete the part blocks 1 and 4. Next stitch the other two part of the block 2 & 4 using the short strips as in the diagram. Adding the last two strips. Join them together in rows and then the rows together to complete the block. You need 4 blocks in total.

Making up the quilt center

Lay out your blocks as in the main diagram. Stitch in rows and then sew your rows together to complete the table topper.

Borders

Inner border

Take your strips of fabric 7. Stitch the sides, press and then the top & bottom.

Middle border

Take the strips of fabric 3. On the top and bottom strips add the squares of fabric 1 to each end.

Sew the sides to the table topper and then stitch the top & bottom to complete the top.

Quilting and binding

Sandwich the table topper, wadding and backing together.

Quilt by hand or machine as desired. Trim the backing and wadding to size of the table topper.

Use your favorite method from fabric 7 to bind the quilt.



A955.B
Fabric 1



A956.A
Fabric 2



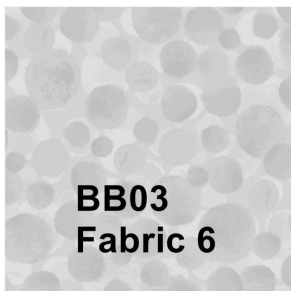
A957.A
Fabric 3



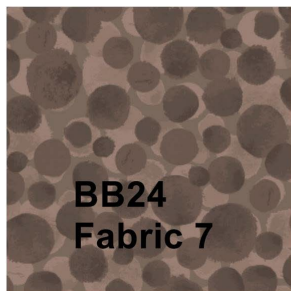
A958.C
Fabric 4



A959.A
Fabric 5



BB03
Fabric 6



BB24
Fabric 7



Sally Ablett © 2025



Designed and made by Sally Ablett – Table topper 3

Size of runner 44" x 44" - unfinished block size 12½" x 12½"



Main Diagram

Fabrics from Country Craft collection

Requirements

1. A955C - Mink croft – fat $\frac{1}{4}$
2. A956C - Honey tractors – fat $\frac{1}{4}$
3. A957B - Farm friends on duck egg - $\frac{1}{2}$ yd - $\frac{1}{2}$ m
4. A958A - Hens on cream - $\frac{3}{8}$ yd - 40cm
5. A959B - Country croft on duck egg - fat $\frac{1}{4}$
6. BB02 - Cream - $\frac{1}{2}$ yd - $\frac{1}{2}$ m
7. BB04 - Latte - $\frac{3}{4}$ yd - $\frac{3}{4}$ m

Wadding and backing 50" x 50"

All measurements include $\frac{1}{4}$ " seam allowances; press each seam as you go

Cutting

From fabric 1 cut

13 x $4\frac{1}{2}$ " x $4\frac{1}{2}$ " for blocks 1 & 2

4 x $3\frac{1}{2}$ " x $3\frac{1}{2}$ " corners on border

From fabric 2 cut

8 x $2\frac{1}{2}$ " x $6\frac{1}{2}$ " block 2

8 x $2\frac{1}{2}$ " x $4\frac{1}{2}$ " block 2

4 x $2\frac{1}{2}$ " x $2\frac{1}{2}$ " block 2

From fabric 3 cut

4 x $3\frac{1}{2}$ " x $38\frac{1}{2}$ " outer border

From fabric 4 cut

10 x $5\frac{1}{4}$ " x $5\frac{1}{4}$ " cut in half diagonally twice block 1

8 x $2\frac{1}{2}$ " x $4\frac{1}{2}$ " block 2

8 x $2\frac{1}{2}$ " x $2\frac{1}{2}$ " block 2

From fabric 5 cut

8 x $2\frac{1}{2}$ " x $6\frac{1}{2}$ " block 2

8 x $2\frac{1}{2}$ " x $4\frac{1}{2}$ " block 2

4 x $2\frac{1}{2}$ " x $2\frac{1}{2}$ " block 2

From fabric 6 cut

20 x 2½" x 4½" block 2

20 x 2½" x 2½" block 2

From fabric 7 cut

2 x 1½" x 38½" inner border top & bottom

2 x 1½" x 36½" inner border sides

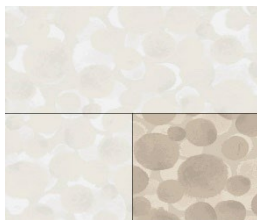
5 x 5¼" x 5¼" cut in half diagonally twice block 1

20 x 2½" x 2½" block 1

Making up the blocks



Block 1 diagram. Lay out your fabric pieces for the block as in the diagram. Sew the corner squares by stitching the two small squares together and then adding your strip 2½" x 4½" of the background fabric.



Look at the diagram for placement of the fabrics.



Stitch two of the small triangles together.

Do the same to the other two and then stitch the two together to make a square. Make the other three in the same way. Lay out as in block diagram a sew in rows and then the rows together to complete the block. You need 5 blocks in total.



Block 2 diagram. This block is made up in four parts. Two of each set for the block.



1



2



3



4

On 1 and 4 you will start by sewing the two squares together. Next add the strip of fabric 4. Now sew the strips of $2\frac{1}{2}$ " x $4\frac{1}{2}$ " to the sides and then the last strips of $2\frac{1}{2}$ " x $6\frac{1}{2}$ " to complete the part blocks 1 and 4. Next stitch the other two part of the block 2 & 4 using the short strips as in the diagram. Adding the last two strips. Join them together in rows and then the rows together to complete the block. You need 4 blocks in total.

Making up the quilt center

Lay out your blocks as in the main diagram. Stitch in rows and then sew your rows together to complete the table topper.

Borders

Inner border

Take your strips of fabric 7. Stitch the sides, press and then the top & bottom.

Middle border

Take the strips of fabric 3. On the top and bottom strips add the squares of fabric 1 to each end.

Sew the sides to the table topper and then stitch the top & bottom to complete the top.

Quilting and binding

Sandwich the table topper, wadding and backing together.

Quilt by hand or machine as desired. Trim the backing and wadding to size of the table topper.

Use your favorite method from fabric 7 to bind the quilt.



A955.C
Fabric 1



A956.C
Fabric 2



A957.B
Fabric 3



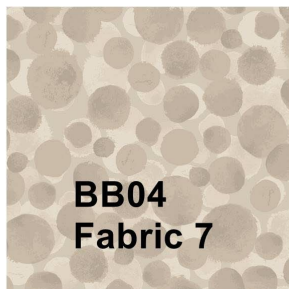
A958.A
Fabric 4



A959.B
Fabric 5



BB02
Fabric 6



BB04
Fabric 7



Sally Ablett © 2025