



Designed and made by Sally Ablett - Throw 1

Size of quilt 48" x 58" - unfinished block sizes 10½" x 10½"



Main Diagram

Fabrics from the Small Things Snuggle Seasons collection: Requirements

1. SM98 - Small Things...Snuggle Season 5" squares panel
2. SM99 - Small Things...Snuggle Season - fat $\frac{1}{4}$
3. SM108 - Warming mugs on dark blue - fat $\frac{1}{4}$
4. SM114 - Hedgehogs on light brown - fat $\frac{1}{4}$
5. SM106 - Pumpkins on cream - fat $\frac{1}{4}$
6. SM112 - Sleepy bears on red - $\frac{3}{8}$ yd - 40cm
7. SM107 - Brollies and scarves on light blue - fat $\frac{1}{4}$
8. SM105 - Apples on crisp green - $\frac{7}{8}$ yd - 80cm
9. BBS10 - Duck egg - $\frac{5}{8}$ yd - 60cm
10. BBS9 - Multi blue - $\frac{3}{4}$ yd - $\frac{3}{4}$ m

Wadding and backing 56" x 60"

All measurements include $\frac{1}{4}$ " seam allowances; press each seam as you go.

You need to join your fabric to get the length for the border strips.

Cutting

From fabric 1 cut

20 x 5 $\frac{1}{2}$ " x 5 $\frac{1}{2}$ " - for both blocks

From each of the fabrics 2, 3 and 4 you need to cut

20 x 3 $\frac{3}{8}$ " x 3 $\frac{3}{8}$ " cut in half diagonally once - block 1

From fabric 5 cut

10 x 6 $\frac{1}{4}$ " x 6 $\frac{1}{4}$ " cut in half diagonally twice - block 2

From fabric 6 cut

40 x 3 $\frac{3}{8}$ " x 3 $\frac{3}{8}$ " cut in half diagonally once - block 2

From fabric 7 cut

20 x 3 $\frac{3}{8}$ " x 3 $\frac{3}{8}$ " cut in half diagonally once - block 2

From fabric 8 cut

2 x 3 $\frac{1}{2}$ " x 52 $\frac{1}{2}$ " sides - outer border

2 x 3 $\frac{1}{2}$ " x 48 $\frac{1}{2}$ " top & bottom - outer border

From fabric 9 cut

10 x 6 $\frac{1}{4}$ " x 6 $\frac{1}{4}$ " cut in half diagonally twice - block 1

20 x 3 $\frac{3}{8}$ " x 3 $\frac{3}{8}$ " cut in half diagonally once - block 1

From fabric 10 cut

2 x 1 $\frac{1}{2}$ " x 50 $\frac{1}{2}$ " sides - inner border

2 x 1 $\frac{1}{2}$ " x 42 $\frac{1}{2}$ " top & bottom - inner border

20 x 3 $\frac{3}{8}$ " x 3 $\frac{3}{8}$ " cut in half diagonally once - block 2

Making up the blocks



Block 1



Block 2

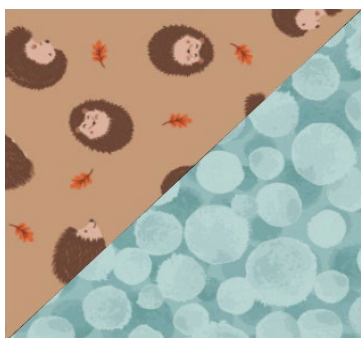
Sewing block 1. Lay out the fabric pieces for the block.



Unfinished block sizes 2 $\frac{1}{2}$ " x 5 $\frac{1}{2}$ "

Stitch a small triangle to the larger triangle, press and then do the same to the other side.

On the next three Flying Geese blocks look as to which side your small triangle fabric pieces need to be.

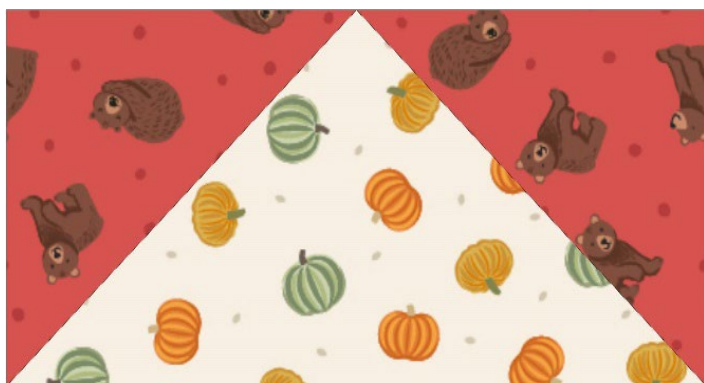


Corner squares. unfinished block sizes $2\frac{1}{2}$ " x $2\frac{1}{2}$ ". Sew the two triangles together to make a square.

Lay out all the pieces as in the block 1 diagram. Stitch in rows and then sew the rows together to complete the block. Ten blocks in total. Each one will have a different center.

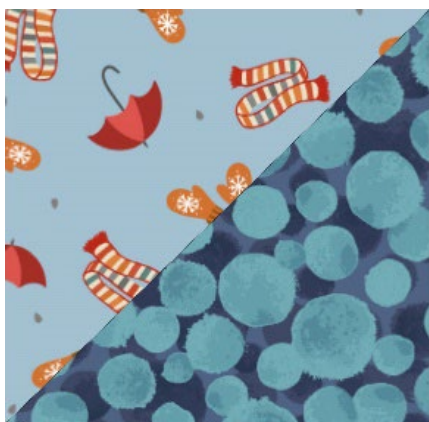
Block 2

Lay out the fabric pieces for block 2 again each center will be different.



Unfinished block sizes $2\frac{1}{2}$ " x $5\frac{1}{2}$ ".

Stitch a small triangle on the long side to the larger triangle on the short side, press and then do the same to the other side.



Corner squares. unfinished block sizes $2\frac{1}{2}$ " x $2\frac{1}{2}$ ". Sew the two triangles together to make a square.

Again, stitch in rows and then sew the rows together to complete the block. Ten in total.

Making up the center of the quilt.

As in the main diagram lay out the blocks. Stitch in rows and then sew your rows together to complete the center.

Borders

Inner border. Take the strips $1\frac{1}{2}$ " x $50\frac{1}{2}$ " of fabric 9 and stitch to the sides. Next strips $1\frac{1}{2}$ " x $42\frac{1}{2}$ " and sew to the top and bottom.

Outer border

Sew the side strips $3\frac{1}{2}$ " x $52\frac{1}{2}$ " to the quilt, press. Next the last two strip to the top and bottom to complete the quilt.

Quilting and binding

Sandwich the quilt top, wadding and backing together.

Quilt by hand or machine as desired. Trim the backing and wadding to size of quilt.

Binding

Use your favorite method from fabric 10 to bind the quilt.



Sally Ablett 2025



Designed and made by Sally Ablett - Throw 2

Size of quilt 48" x 58" - unfinished block sizes 10½" x 10½"



Main Diagram

Fabrics from the Small Things Snuggle Seasons collection: Requirements

1. SM98 - Small Things...Snuggle Season 5" squares panel
2. SM109 - Harvest mice and berries on warm lavender - fat $\frac{1}{4}$
3. SM110 - Cats and falling leaves on cream - fat $\frac{1}{4}$
4. SM100 - Squirrels on buttermilk - fat $\frac{1}{4}$
5. SM104 - Scarecrows on harvest yellow - fat $\frac{1}{4}$
6. SM102 - Owls on sage green - $\frac{3}{8}$ yd - 40cm
7. SM103 - Toadstools on grey - fat $\frac{1}{4}$
8. SM101 - Autumn trees on dark cream - $\frac{7}{8}$ yd - 80cm
9. BBS1 - Cream and gold - $\frac{5}{8}$ yd - 60cm
10. BBS13 - Autumn leaves - $\frac{3}{4}$ yd - $\frac{3}{4}$ m

Wadding and backing 56" x 60"

All measurements include $\frac{1}{4}$ " seam allowances; press each seam as you go.

You need to join your fabric to get the length for the border strips.

Cutting

From fabric 1 cut

20 x 5 $\frac{1}{2}$ " x 5 $\frac{1}{2}$ " - for both blocks

From each of the fabrics 2, 3 and 4 you need to cut

20 x 3 $\frac{3}{8}$ " x 3 $\frac{3}{8}$ " cut in half diagonally once - block 1

From fabric 5 cut

10 x 6 $\frac{1}{4}$ " x 6 $\frac{1}{4}$ " cut in half diagonally twice - block 2

From fabric 6 cut

40 x 3 $\frac{3}{8}$ " x 3 $\frac{3}{8}$ " cut in half diagonally once - block 2

From fabric 7 cut

20 x 3 $\frac{3}{8}$ " x 3 $\frac{3}{8}$ " cut in half diagonally once - block 2

From fabric 8 cut

2 x 3 $\frac{1}{2}$ " x 52 $\frac{1}{2}$ " sides - outer border

2 x 3 $\frac{1}{2}$ " x 48 $\frac{1}{2}$ " top & bottom - outer border

From fabric 9 cut

10 x 6 $\frac{1}{4}$ " x 6 $\frac{1}{4}$ " cut in half diagonally twice - block 1

20 x 3 $\frac{3}{8}$ " x 3 $\frac{3}{8}$ " cut in half diagonally once - block 1

From fabric 10 cut

2 x 1 $\frac{1}{2}$ " x 50 $\frac{1}{2}$ " sides - inner border

2 x 1 $\frac{1}{2}$ " x 42 $\frac{1}{2}$ " top & bottom - inner border

20 x 3 $\frac{3}{8}$ " x 3 $\frac{3}{8}$ " cut in half diagonally once - block 2

Making up the blocks

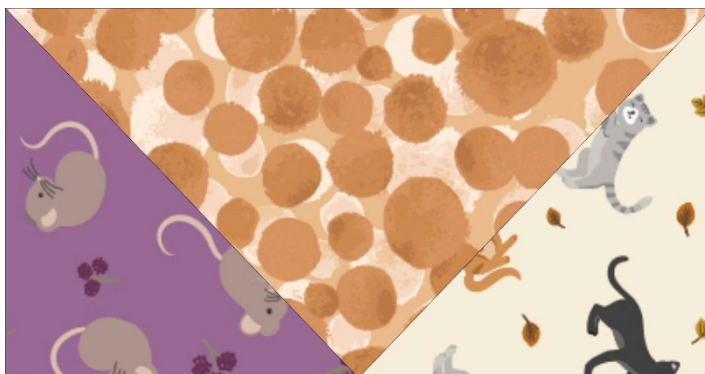


Block 1



Block 2

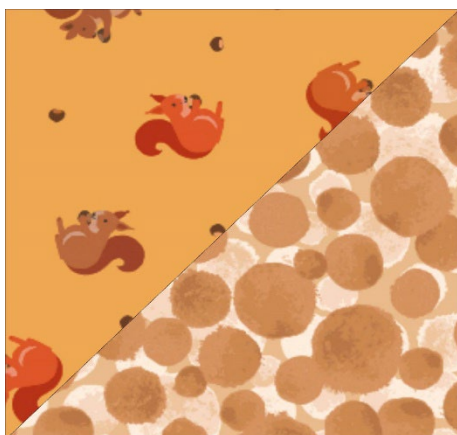
Sewing block 1. Lay out the fabric pieces for the block.



unfinished block sizes 2 $\frac{1}{2}$ " x 5 $\frac{1}{2}$ "

Stitch a small triangle to the larger triangle, press and then do the same to the other side.

On the next three Flying Geese blocks look as to which side your small triangle fabric pieces need to be.



Corner squares. unfinished block sizes $2\frac{1}{2}$ " x $2\frac{1}{2}$ ". Sew the two triangles together to make a square.

Lay out all the pieces as in the block 1 diagram. Stitch in rows and then sew the rows together to complete the block. Ten blocks in total. Each one will have a different center.

Block 2

Lay out the fabric pieces for block 2 again each center will be different.



Unfinished block sizes $2\frac{1}{2}$ " x $5\frac{1}{2}$ ".

Stitch a small triangle on the long side to the larger triangle on the short side, press and then do the same to the other side.



Corner squares. unfinished block sizes $2\frac{1}{2}$ " x $2\frac{1}{2}$ ". Sew the two triangles together to make a square.

Again, stitch in rows and then sew the rows together to complete the block. Ten in total.

Making up the center of the quilt.

As in the main diagram lay out the blocks. Stitch in rows and then sew your rows together to complete the center.

Borders

Inner border. Take the strips $1\frac{1}{2}$ " x $50\frac{1}{2}$ " of fabric 9 and stitch to the sides. Next strips $1\frac{1}{2}$ " x $42\frac{1}{2}$ " and sew to the top and bottom.

Outer border

Sew the side strips $3\frac{1}{2}$ " x $52\frac{1}{2}$ " to the quilt, press. Next the last two strip to the top and bottom to complete the quilt.

Quilting and binding

Sandwich the quilt top, wadding and backing together.

Quilt by hand or machine as desired. Trim the backing and wadding to size of quilt.

Binding

Use your favorite method from fabric 10 to bind the quilt.



Sally Ablett 2025